



APRIL

The official publication of Incarnation Lutheran Church

WHAT'S INSIDE THIS ISSUE:

Pastor Emily	2-3
CDC	4
Faith Formation Corner	5
Music	6
Stewardship	7
Life Around the Church	8
More Justice Rally Report	9
April Calendar	10
Newberry College	11
Little Free Pantry	12

Update from the Memorial Garden Board:

Due to the increase in engraving cost to niche fronts the MGB voted on February 7th to increase the price of niches from \$1200 to \$1500 per niche. This increase will be effective April 13, 2024, the 11th anniversary of our columbarium.



PASTOR EMILY

An Easter Reflection by Frederich Buechner

Christmas has a large and colorful cast of characters including not only the three principals themselves, but the angel Gabriel, the innkeeper, the shepherds, the heavenly host, the three Wise Men, Herod, the star of Bethlehem, and even the animals kneeling in the straw. In one form or another we have seen them represented so often that we would recognize them anywhere. We know about the birth in all its detail as well as we know about the births of ourselves or our children, maybe more so. The manger is as familiar as home. We have made a major production of it, and as minor attractions we have added the carols, the tree, the presents, the cards. Santa Claus, Ebenezer Scrooge, and so on. With Easter it is entirely different.

The Gospels are far from clear as to just what happened. It began in the dark. The stone had been rolled aside. Matthew alone speaks of an earthquake. In the tomb there were two white-clad figures or possibly just one. Mary Magdalen seems to have gotten there before anybody else. There was a man she thought at first was the gardener. Perhaps Mary the mother of James was with her and another woman. One account says Peter came too with one of the other disciples. Elsewhere the suggestion is that there were only the women and that the disciples, who were somewhere else, didn't believe the women's story when they heard it. There was the sound of people running, of voices. Matthew speaks of "fear and great joy." Confusion was everywhere. There is no agreement even as to the role of Jesus himself. Did he appear at the tomb or only later? Where? To whom did he appear? What did he say? What did he do?

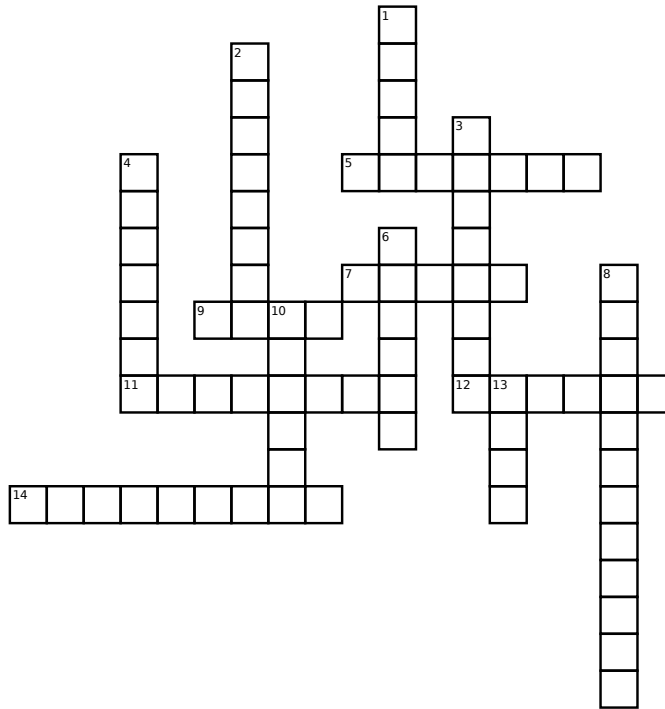
It is not a major production at all, and the minor attractions we have created around it—the bunnies and baskets and bonnets, the dyed eggs—have so little to do with what it's all about that they neither add much nor subtract much. It's not really even much of a story when you come right down to it, and that is of course the power of it. It doesn't have the ring of great drama. It has the ring of truth. If the Gospel writers had wanted to tell it in a way to convince the world that Jesus indeed rose from the dead, they would presumably have done it with all the skill and fanfare they could muster. Here there is no skill, no fanfare. They seem to be telling it simply the way it was. The narrative is as fragmented, shadowy, incomplete as life itself. When it comes to just what happened, there can be no certainty. That something unimaginable happened, there can be no doubt.

The symbol of Easter is the empty tomb. You can't depict or domesticate emptiness. You can't make it into pageants and string it with lights. It doesn't move people to give presents to each other or sing old songs. It ebbs and flows all around us, the Eastertide. Even the great choruses of Handel's Messiah sound a little like a handful of crickets chirping under the moon.

He rose. A few saw him briefly and talked to him. If it is true, there is nothing left to say. If it is not true, there is nothing left to say. For believers and unbelievers both, life has never been the same again. For some, neither has death. What is left now is the emptiness. There are those who, like Magdalen, will never stop searching it till they find his face.

Pastor Emily

Happy Easter!



Down:

1. What Jesus offers scared disciples
2. The title Mary Magdalene uses when she recognizes Jesus
3. In France each year a gigantic _____ is prepared in honor of Easter
4. Highly decorated Ukrainian egg
6. The disciple who misses Jesus' visit
8. Jesus rising from the dead
10. According to Mark, Mary Magdalene, Mary, and _____ come to anoint Jesus' body
13. The first disciple to discover the empty tomb

Across:

5. This island celebrates Christ's resurrection with kite flying
7. The number of days Jesus is in the tomb
9. The first thing Jesus eats after his resurrection
11. A celebratory word
12. The name of the village where Jesus appears to two disciples
14. The Joseph who collects Jesus' body to lay it to rest



CDC

Swinging into Spring!



FAITH FORMATION CORNER



Holy Saturday



HAPPY EASTER



Alleluia! Christ is risen! Christ is risen indeed! Alleluia!



MUSIC CORNER

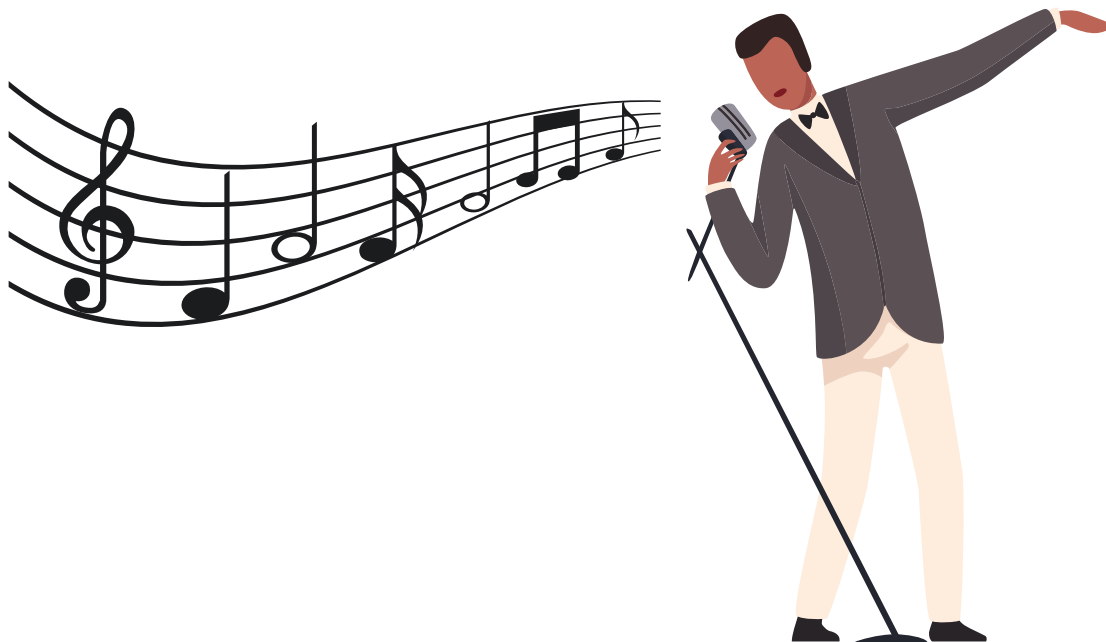
About the Choir



Elliott Stewart is the Director of Bands at Longleaf Middle School and Assistant Band Director with the Westwood High School Marching Band as well as the baritone section leader here at Incarnation Lutheran.

Click the link below to learn more about him and what he does.

<https://longleafband.weebly.com/about-the-director.html>



STEWARDSHIP



Steward our one and
only home: Earth

“The good leave an inheritance to their children’s children.” –Proverbs 13:22a

Look at the babies in your congregation and your circle of friends and family. You want them to grow up in the same kind of beautiful, safe, abundant world you did, right? But that’s increasingly in doubt.

Over the next 50 years, climate change and environmental crises will disrupt patterns of nature and civilization that have developed over millennia. Some scientists even wonder whether the planet will be habitable in 2124.

World wide horrific wildfires may be just a sample of things to come, along with worsening hurricanes, more-frequent tornadoes, rising sea levels, rapid desertification, and melting glaciers and icebergs. It’s not that our world did not already have serious problems with such issues as war, refugees, hunger, species extinction, pollution and extreme weather, but climate change is making them all much worse and much more complicated.

Christians trust in the Almighty, while we also recognize that God calls us to love one another and care for the only home God has given us.

“If we truly believe we’ve been given responsibility for every living thing on this planet (including each other) as it says in Genesis 1, then it isn’t only a matter of caring about climate change,” writes evangelical Christian and climate scientist Katherine Hayhoe. “We should be at the front of the line demanding action.”

This month we have much to celebrate in the new life we have through our resurrected Lord. We also celebrate spring, seedtime, and Earth Day on April 22.

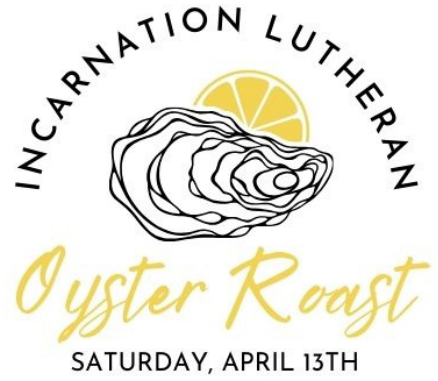
Let us commit ourselves to renewing and protecting the only home we have, the only home we will leave for our children.

Copyright © 2020, Rev. Robert Blezard. Reprinted by permission. Pastor Blezard serves as an assistant to the bishop of the Lower Susquehanna Synod and works as content editor for www.stewardshipoflife.org. He blogs at www.thestewardshipguy.com.



THE STAFF AT INCARNATION LUTHERAN WOULD LIKE TO THANK THE CONGRAGATION FOR THEIR 2023 LOVE OFFERING!

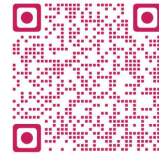
SIGNED: PASTOR EMILY, KIMI DAIL, AMY KEHL, TERESA BOYKIN, PATRICK HAWKINS, CHARLOTTE DOVER



Incarnation Lutheran Church
VBS 2024

JUNE 24-27
from 9 am to 12 pm

Scan the QR Code to register your child or to sign up to volunteer!



Like Good Stewards

"Like good stewards of the manifold grace of God, serve one another with whatever gift each of you has received." | Peter 4:10

Would you like to attend the 2024 Synod Assembly from the comfort of home? The 2024 South Carolina Synod Assembly will be held June 8th and will be a one day online event. Please contact Pastor Emily or Russ Rushe if you are interested in representing Incarnation Lutheran Church and hearing updates from all across the synod.

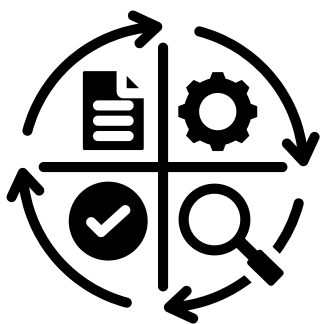
*those who have completed Kindergarten thru 5th grade

*If your child is registered for Incarnation Summer Program your child is already on the list for VBS



Oktoberfest is looking for people interested in running the kitchen and cook tent as part of a leadership team!

Please contact Pastor Emily, Mary Karl Boepple, or Sarah Sawicki if interested.



More Justice

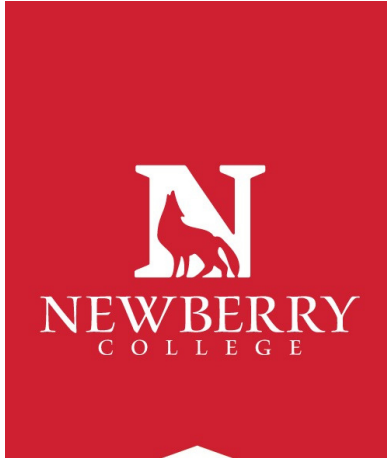


2024 Nehemiah Action Rally

As many of you know, the More Justice Nehemiah Action Rally occurred on Monday March 18, 2024. The event was held at Eau Claire High School. The three areas addressed during this rally included Gun Violence, Food Insecurities, and Affordable Housing.

- 650 community members of many faiths came together to Do Justice.
- 20 persons representing Incarnation Lutheran Church attended the Rally. Thank you. Thank you.
- The Office of Violent Crime Prevention has undertaken an assessment through the Community Action Fund. While we are still waiting for the results, we are hopeful that this is a strong assessment. More Justice will remain vigilant in our efforts to reduce gun violence.
- Columbia City Councilmembers Will Brennan and Tyler Baily have agreed to increase the number of service locations for the Mobile Market from 3 to 9 and to secure and allocate \$20,000 monthly for food security solutions.
- Richland County Council has put Affordable Housing on their strategic plan for 2024 and created a committee dedicated to using \$4M to increase our number of affordable housing units. Come September 2024, we will begin the process all over again. More Justice can be achieved when we work together.

Your Higher Education Partner in Ministry for 167 Years



Newberry College celebrates the grand opening of the Darby Nursing & Health Science Center in August 2023.



Growth

Campus Landscape Continues to Expand

In the past year, Newberry College celebrated the grand opening of the Darby Nursing & Health Science Center and Founders Federal Credit Union Field House. The College's ninth residence hall is currently under construction and is estimated to open its doors in fall 2024.

Stewardship

Wolves Pantry Receives Support to Address Campus Food Inaccessibility

Located in Weber House, the Wolves Pantry has generated widespread support to curb food insecurity on campus. Since September 2022, it has received four grants from the South Carolina and Southeastern Lutheran synods, as well as food items and more than \$12,000 in monetary donations from 12 congregations, the Lutheran Men in Mission (LMM), the Women of the Evangelical Lutheran Church in America (WELCA), and countless individuals.



About Newberry College

Rich in History and Tradition

Located in Newberry, South Carolina, Newberry College is a small liberal arts college, founded in 1856. The student body is approximately 1,400 strong, representing 42 states and 33 countries. Special thanks to the South Carolina, Southeastern, and Florida-Bahamas Synods, and Bishops Aebischer, Strickland, and Suarez for continued support of Newberry College.

Newberry College
Office of Institutional Advancement
2100 College St. | Newberry, SC 29108 | newberry.edu
803.321.5363 or institutional.advancement@newberry.edu

Sun	Mon	Tue	Wed	Thu	Fri	Sat
<p>9am - Handbell Choir</p> <p>9am - Sunday School</p> <p>10am - Easter Worship</p>	<p>6pm - Troop 8</p>	<p>9am - Staff Meeting</p> <p>10am - Quilting Group</p> <p>3:45pm - Kids Chapel in 6pm - Pack 8</p>	<p>11am - Kids Chapel in</p> <p>11am - Wednesday Bible</p>			
<p>9am - Sunday School</p> <p>10am - Worship</p> <p>11am - W&M Meeting</p>	<p>5pm - Music - USC:</p> <p>6pm - Troop 8</p>	<p>9am - Staff Meeting</p> <p>10am - Quilting Group</p> <p>3:45pm - Kids Chapel in 6pm - Pack 8</p> <p>6:30pm - Council Meeting</p> <p>7:30pm - Music - USC:</p>	<p>11am - Kids Chapel in</p> <p>6pm - Handbell Choir</p> <p>6:30pm - Executive</p> <p>7pm - Chancel Choir</p>	<p>6pm - Mary Martha</p>		<p>4pm - Oyster Roast</p>
<p>9am - Sunday School</p> <p>10am - Worship</p> <p>11:30am - Confirmation</p>	<p>6pm - Troop 8</p>	<p>9am - Staff Meeting</p> <p>10am - Quilting Group</p> <p>3:45pm - Kids Chapel in 6pm - Pack 8</p>	<p>11am - Kids Chapel in</p> <p>11am - Wednesday Bible</p> <p>6pm - Handbell Choir</p> <p>7pm - Chancel Choir</p>	<p>6pm - Holy Guacamole</p>		
<p>9am - Sunday School</p> <p>10am - Worship</p> <p>11:30am - Confirmation</p> <p>4pm - Beloved @ Mt.</p>	<p>6pm - Troop 8</p>	<p>9am - Staff Meeting</p> <p>10am - Quilting Group</p> <p>3:45pm - Kids Chapel in 5:30pm - MFFC in Parlor 6pm - Pack 8</p>	<p>11am - Kids Chapel in</p> <p>11am - Wednesday Bible</p> <p>6pm - Handbell Choir</p> <p>7pm - Chancel Choir</p>			
<p>9am - Sunday School</p> <p>10am - Worship</p> <p>11:30am - Confirmation</p> <p>6pm - PCO: Concert @</p>	<p>6pm - Troop 8</p>	<p>9am - Staff Meeting</p> <p>10am - Quilting Group</p> <p>3:45pm - Kids Chapel in 6pm - Pack 8</p>	<p>11am - Kids Chapel in</p> <p>11am - Wednesday Bible</p> <p>6pm - Handbell Choir</p> <p>7pm - Chancel Choir</p>			

LITTLE FREE PANTRY

As warmer weather approaches, please remember the Little Free Pantry. We refill the pantry twice a week. Our community seems to depend on our help to feed them. Please remember to bring some of the items listed below or donate specifically to the Little Free Pantry online or in your usual donation.

Items needed: Tuna Fish, Canned Meals like Chili, Beef Stew, Mac and Cheese, and Ravioli, Cereal - hot and cold, Fruit cups, Soup, Granola Bars, Fruit bars Crackers - plain and filled, Pasta, Spaghetti sauce, Water, Toiletry items - toothpaste, toothbrushes, soap, shampoo (NO mouthwash,) Hand Wipes, Hand Sanitizers - small size.

GET IN TOUCH

Our Ministry Staff contacts are:

Rev. Emily Willhide.....pastoremily@incarnationlutheran.com
Dr. Patrick Hawkins; Dir. of Music & Organist.....music@incarnationlutheran.com
Kimi Dail; Faith Formation Coordinator.....youth@incarnationlutheran.com
Amy Kehl; Bookkeeper.....amy.kehl@incarnationlutheran.com
Teresa Boykin; CDC Director.....cdc@incarnationlutheran.com
Cherry Samuel; CDC-Byron Rd.....cdcbyron@incarnationlutheran.com
Bonnie McDaniel; Parish Administrator.....office@incarnationlutheran.com

Worship: Sundays at 10 a.m.

Sunday School for all ages at 9 a.m.

(10 a.m. Worship is also live streamed on Facebook.)

Office Hours: Monday - Friday, 9 a.m. - 1 p.m.

3005 Devine Street, Columbia, SC 29205

Office: 803-256-2381

CDC: 803-661-6378

www.incarnationlutheran.com

www.facebook.com/IncarnationLutheranChurch